



OVERALL CREEK ESP

Monthly Newsletter | November 2020

IMPORTANT DATES

November 3rd

Election Day - No School
Open 6:00AM - 6:00PM

November 25th - 27th

ESP CLOSED for
Thanksgiving Break

CURBSIDE HOURS



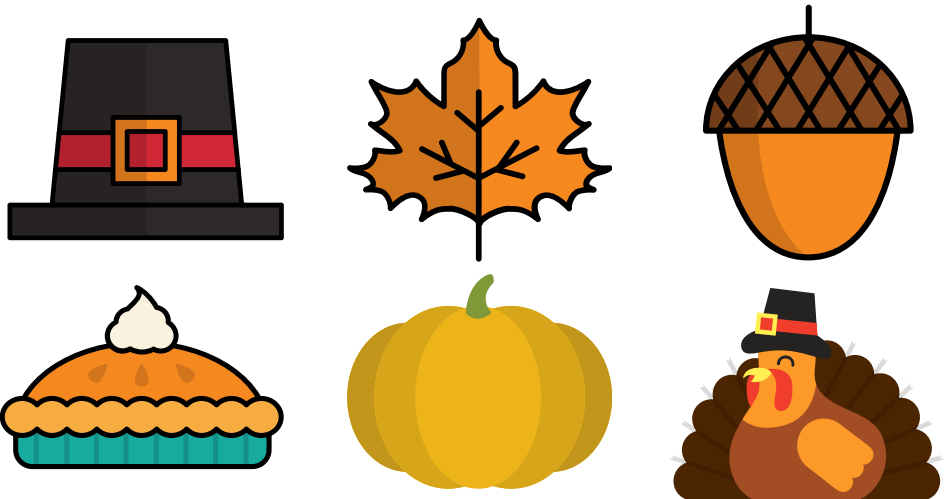
Mornings

6:00AM - 6:45AM
(IN THE BACK)

6:45AM - 7:15AM
(SIDE PARKING LOT)

Afternoons

3:00PM - 6:00PM



Thanksgiving Week

ESP will be **CLOSED** Wednesday 11/25 – Friday 11/27 in observance of the Thanksgiving Holiday.

Full Time students will be billed the drop-in rate of \$19 per child K-6, or \$20 per child Pre-K for Monday, 11/23, and Tuesday, 11/24. If your child doesn't attend, your account will not be billed.

AM Only, RISE, DHS students will be billed your regular weekly tuition regardless of attendance. If your child will not attend at all this week, and if you still have a vacation week available, you may fill out the Vacation Request Form to be credited for the week of 11/23 – 11/27.

Please click **HERE** for Vacation Request Form.

REMINDERS

- There is no additional charge on half days if your child/children attend ESP.
- With colder weather, please make sure you are putting your child's name on their jackets/coats, as we do lose many of those when we go outside.
- If your child is experiencing any COVID symptoms and they come to the ESP office, we will have to follow the "Return to School After Illness" protocols, so please make sure your children are being completely honest when coming to us about not feeling well.
- Medication of any kind cannot be carried by a child in ESP, whether it be Advil or allergy medicine. The ESP office needs to hold the medicine, and we must have documentation in order to administer any medication.
- If, for any reason, your school day classroom has to quarantine, your billing will be adjusted and you will not have to pay for the time that you are out.

TUITION PAYMENTS

- Tuition is due every Monday by 6 p.m. If payment is not received by Monday at 6 p.m., the account will be delinquent. If the account is not paid in full by Tuesday at 6 p.m., it will be suspended, and child(ren) will not be able to attend until payment is made.
- Acceptable forms of payment include: credit/debit, money order, or electronic check. Payments can be made by phone, in person, or through your online EZ Child Track Parent Portal. ESP does not accept cash payments.

ESP STAFF

Miss Abby
Miss Allison
Miss Bailey
Miss Delaney
Miss Eleiyah
Miss Haley
Miss Jamiya
Miss Jana
Miss Jazmyn
Miss Jordyn
Mister Josh
Miss Maisen
Miss Morgan
Miss Sara J.
Miss Sara P.
Miss Taylor

ASSISTANT DIRECTOR

Kathy Holden
Kathy.Holden@cityschools.net

ACCOUNTS MANAGER

Dianne Click
Dianne.Click@cityschools.net
615-624-5504

FOLLOW US ON SOCIAL MEDIA



@ESPatMCS



Murfreesboro
City Schools ESP



www.cityschoolsesp.net