



# SALEM ESP

Monthly Newsletter | July 2021

## IMPORTANT DATES

**July 5**

ESP CLOSED

in observance of July 4th

**July 9**

ESP Registration for the  
2021-2022 School Year  
Opens at 9 a.m.

**July 26-30**

Kindercamp  
9:00-1:00 | \$60 per child

**July 30**

Last Day of Summer ESP

**August 2**

First Day of 2021-2022  
School Year ESP

## WE LOVE SUMMER ESP!



- Summer camps open up for registration 2 weeks before the camp start date. Don't forget to sign up! Check out our [Summer Calendar](#) for more details.
- **No meals will be provided July 1, 2 or 6.** All students need breakfast, lunch and snack on these days.
- Kona Ice is here at Salem every Friday! Please send \$2 cash only on these days for your child to participate.
- July 14 is Water Relay Day! Make sure to apply sunscreen before coming to school. All students will need a towel and change of clothes.
- Kindercamp is July 26-30! This is available for all incoming Kindergarteners. Spots are limited, so sign up today at [www.ezchildtrack.com/esp/parent](http://www.ezchildtrack.com/esp/parent).



# SUMMER FEEDING

Breakfast and lunch will be provided for all students throughout Summer while Summer School is in session. Every child that attends ESP in the afternoon, even Summer School students, need to still provide their own snack as we will not be providing snack. **Summer feeding will end July 21.**

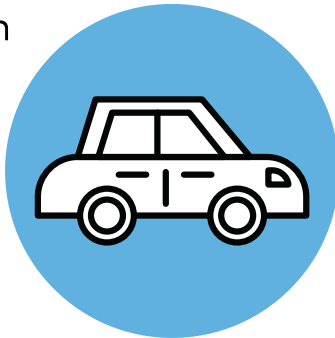


**Below are dates that we will NOT be fed breakfast and lunch.** If your child attends ESP these days, they will need a breakfast, lunch and snack:

- July 1
- July 2
- July 6

## SUMMER CURBSIDE

Due to Summer School being in the building along with ESP, our summer curbside hours are as follows:



### AM Drop-off:

- 6:00-6:45 a.m. @ Back Loop
- 6:45-7:45 a.m. @ Side Gym Parking Lot
- 7:45-9:00 a.m. @ Back Loop

Please have students dropped off by 9:00 a.m.

If you need to pick up between 12:00-1:00 p.m., due to Summer School using the back loop, ESP will have a curbside staff at the side gym parking lot.

### PM Pick-up:

- 2:00-6:00 p.m. @ Back Loop

# ESP STAFF

Miss Bethany  
Miss Cassidy  
Miss Corinne  
Miss Hannastasia  
Miss Kailey  
Miss Kelly  
Miss Kloe  
Miss Kassidy  
Miss Lexi  
Miss Lily  
Miss Lizzy  
Miss Megan  
Miss Morgan K.  
Miss Morgan M.

### Curbside

Miss Victoria  
Miss Bibiana

### Caller

Miss Abby  
Mr. Kobe

### Assistant Directors

Shannon Jordan  
Shannon.Jordan@cityschools.net  
Kobe Timberlake (AM Only)

### Account Manager

Jessica Weakley  
Jessica.Weakley@cityschools.net  
615-898-7105

# FOLLOW US!



@[ESPatMCS](#)



[Murfreesboro  
City Schools ESP](#)



[www.cityschoolsesp.net](http://www.cityschoolsesp.net)